

Infant Deaths for the City of Worcester for 2010

Infant Characteristics

How many infants died?:	14	
How many died of prematurity?	11	79%
How many were due to anomalies?	3	21%
How many weighed <500gms?	8	57%
How many were LBW (<2500) gms)?	12	86%
How many were VLBW (<1500 gms)?	11	79%
How many were neonatal deaths (<29 days)?	14	100%
How many infants were from a multiple preg?	3	21%

Maternal

How many were unmarried?:	7	50%
How many were on government insurance?	8	57%
How many were not high school grads?:	0	0%
How many were teens?	0	0%
How many were black?	3	21%
How many blacks were non-native?	2	67%
How many were white- non hispanic?:	6	43%
How many were Asian?:	1	7%
How many were Hispanic?:	4	29%
How many were using drugs?:	2	14%
How many used Alcohol?:	1	7%
How many were smokers?:	6	43%
How many were obese?	7	
How many enrolled in the 1st Trimester?:	12	86%
How many missed prenatal visits?	2	14%
How many had adequate prenatal care?	12	86%
How many infant deaths were from target census tracts?:	1	7%

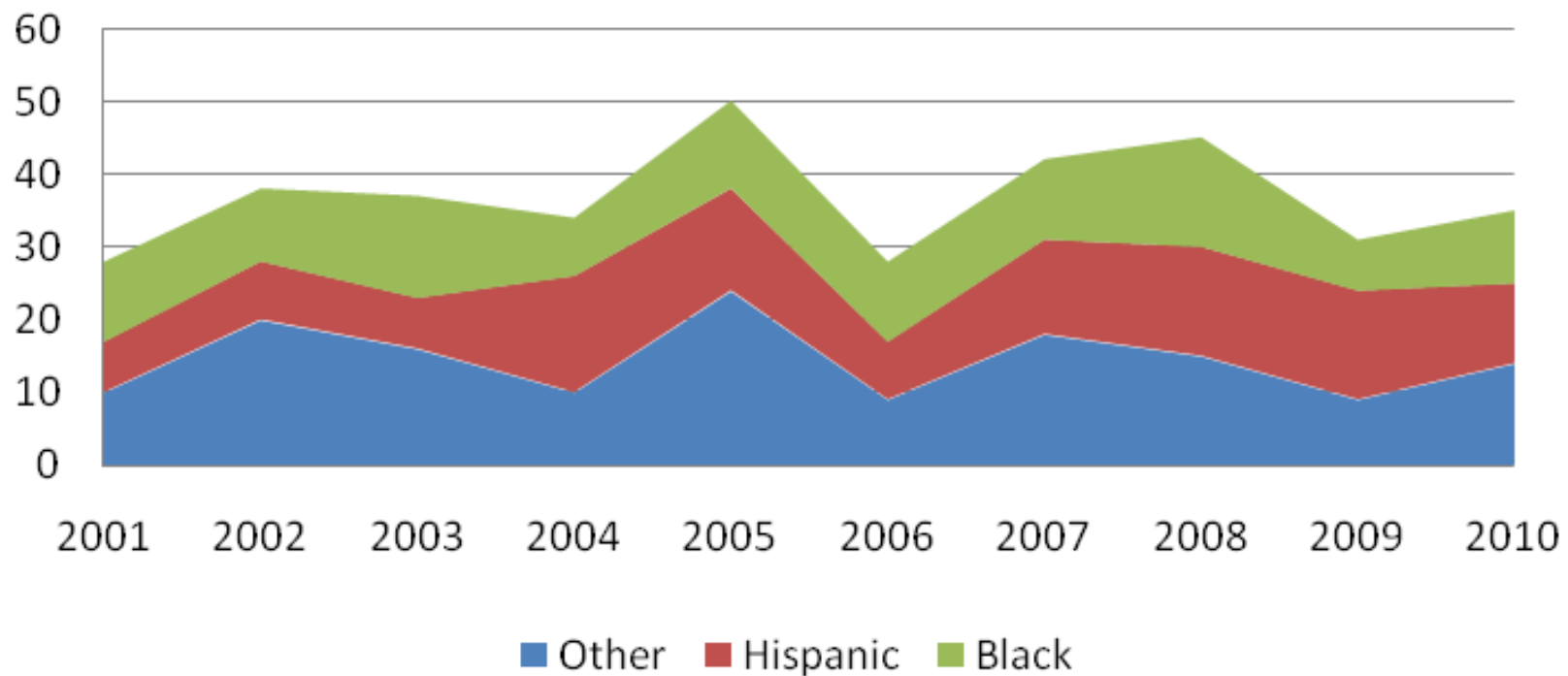
Infant Deaths for the City of Worcester for 2010

Where did they receive prenatal care?	MEM CLINIC	5
	MEM PVT	4
	PVT	4
How many Mem Patients were transfers?		4
Where did they transfer from?	ARLINGTON	1
	FALLON	1
	EMK	1
	HFHC	1

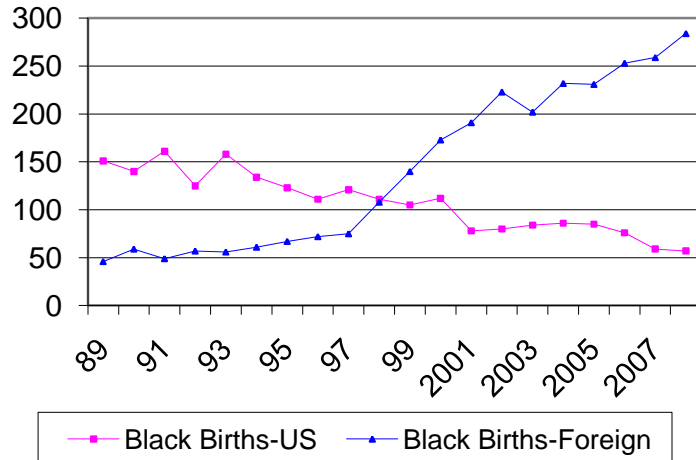
Worcester Infant Mortality Summary 2005-2010

Infant Characteristics	2010	2009	2008	2007	2006	2005
How many infants died?:	14	18	28	20	12	34
How many died of prematurity?	11 79%	12 67%	14 50%	10 50%	8 67%	20 59%
How many were due to anomalies?	3 21%	2 11%	8 29%	5 25%	2 17%	9 26%
How many weighed <500gms?	8 57%	8 44%	9 32%	7 35%	6 50%	12 35%
How many were LBW (<2500 gms)?	12 86%	13 72%	20 71%	14 70%	9 75%	27 79%
How many were VLBW (<1500 gms)?	11 79%	12 67%	15 54%	14 70%	9 75%	23 68%
How many were neonatal deaths (<29 days)?	14 100%	13 72%	21 75%	14 70%	9 75%	29 85%
How many infants were from a multiple preg?	3 21%	3 17%	1 4%	2 10%	1 8%	12 35%
Maternal Characteristics						
How many were unmarried?:	7 50%	10 56%	15 54%	10 50%	7 58%	15 44%
How many were on government insurance?	8 57%	4 22%	14 50%	13 65%	5 42%	20 59%
How many were not high school grads?:	0 0%	2 11%	1 4%	1 5%	2 17%	6 18%
How many were teens?	0 0%	4 22%	2 7%	3 15%	1 8%	7 21%
How many were black?	3 21%	4 22%	11 39%	6 30%	5 42%	6 18%
How many blacks were non-native?	2 67%	2 50%	10 91%	4 20%	4 80%	3 50%
How many were white- non Hispanic?	6 43%	6 33%	6 21%			
How many were Asian?	1 7%	1 6%	0 0%			
How many were Hispanic?:	4 29%	7 39%	12 43%	7 35%	5 42%	14 41%
How many were using drugs?:	2 14%	2 11%	3 11%	3 15%	0 0%	2 6%
How many used Alcohol?:	1 7%	0 0%	0 0%	0 0%	0 0%	0 0%
How many were smokers?:	6 43%	1 6%	6 21%	5 25%	4 33%	3 9%
How many were obese? (incomplete)	7 50%	8 44%	14 50%			
How many enrolled in the 1st Trimester?:	12 86%	14 78%	20 71%	16 80%	10 83%	25 74%
How many missed prenatal visits?	2 14%	2 11%	8 29%	2 10%	4 33%	5 15%
How many had adequate prenatal care?	12 86%	16 89%	23 82%	19 95%	10 83%	29 85%
How many were from target census tracts?	1 7%	5 28%	13 46%			

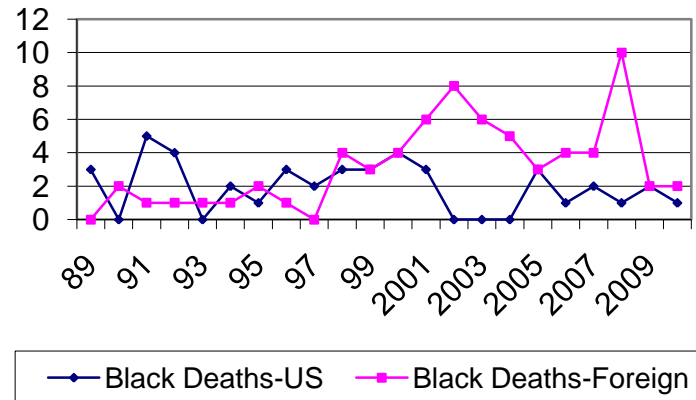
Feto-Infant Mortality raw numbers



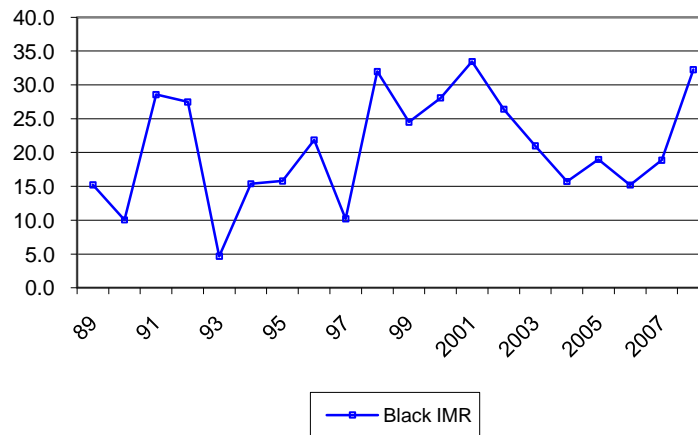
Black Births in Worc.



Black Infant Deaths in Worc.

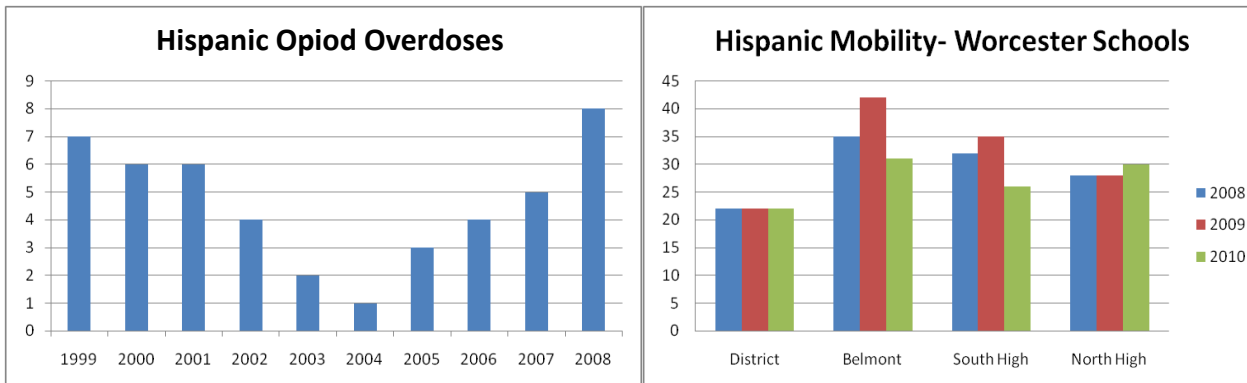
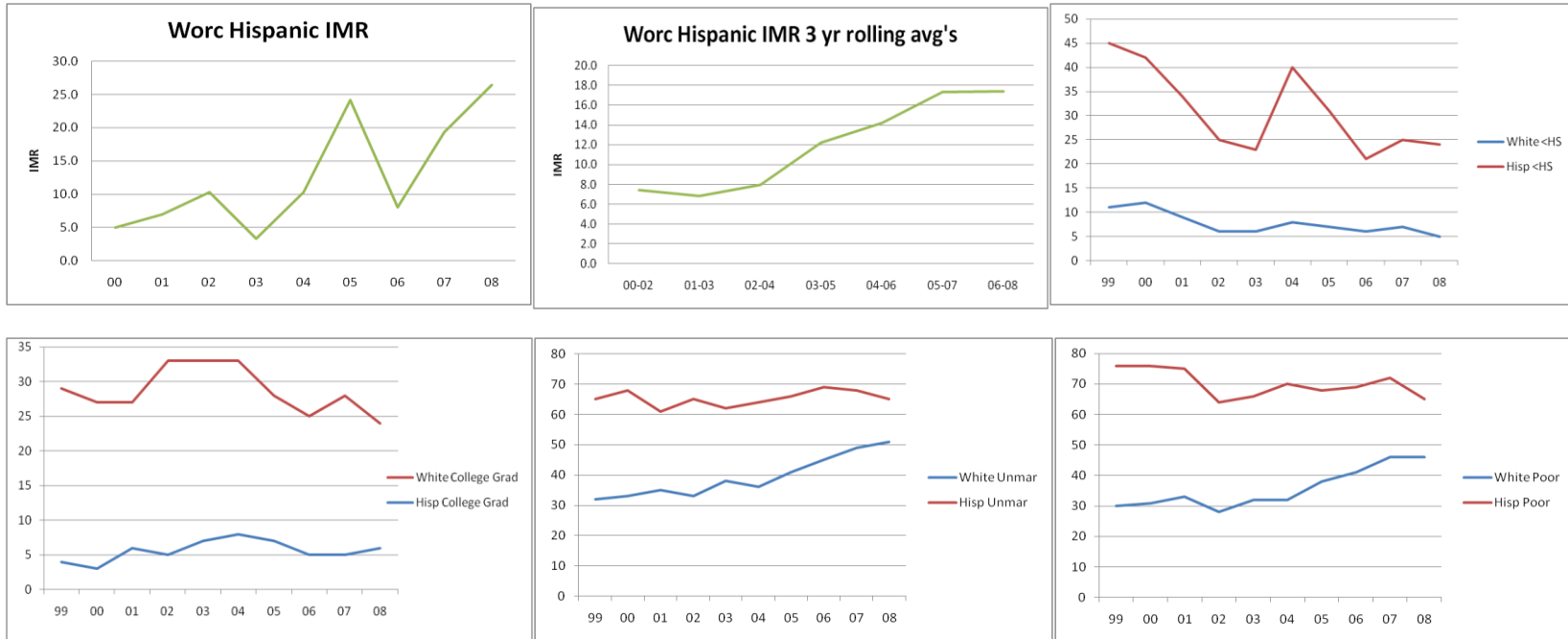


Black IMR in Worc.

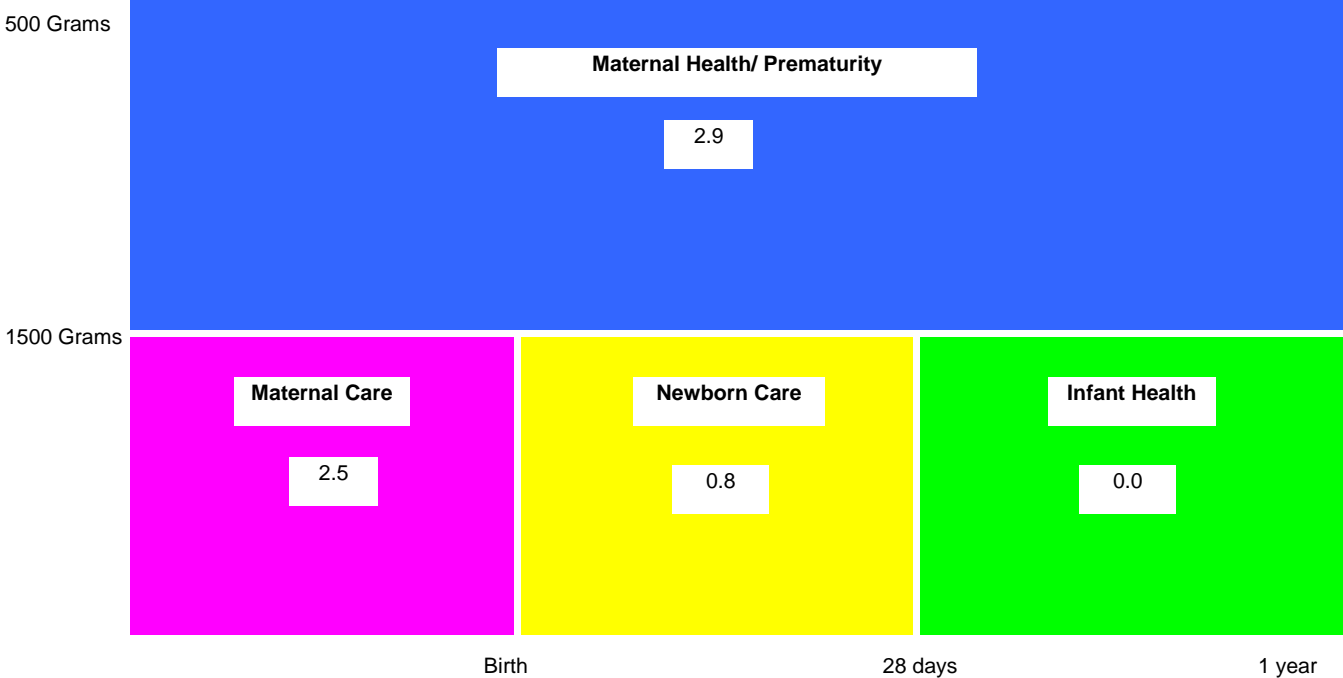


Worcester Hispanic Analysis

Infant mortality is an indicator of population based distress that reaches beyond the mother-child pair.

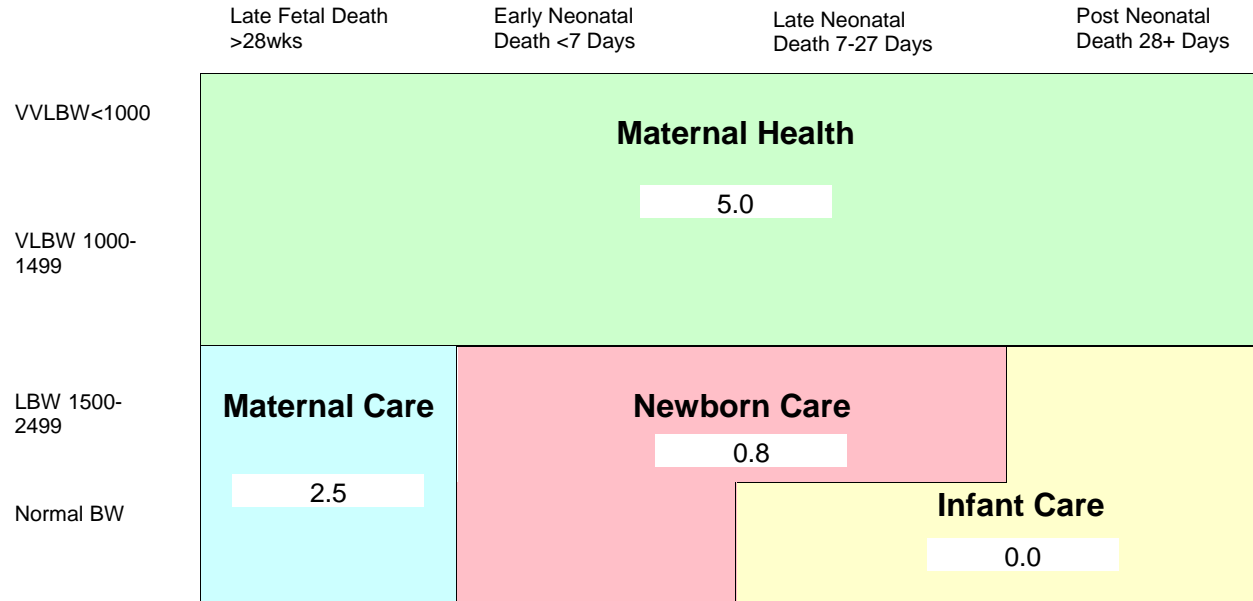


Perinatal Periods Of Risk Report- Worcester- 2010



Stillbirths>23 weeks <1500 Grams	7	Total Feto-Infant Mortality	6.2
Stillbirths >1499 Grams	6	Infant Mortality >499 Grams	2.1
Infant Deaths >1499 Grams and before 28 days	2		
Infant Deaths >1499 Grams and after 27 days	0		

Periods of Risk Model Worcester Fetal-Infant Mortality 2010- Original Definitions



Total Fetal-Infant Mortality: 8.7

Total Infant Mortality: 5.8

Periods of Risk Model Worcester Fetal-Infant Mortality 2001-2009

	Late Fetal Death >28wks	Early Neonatal Death <7 Days	Late Neonatal Death 7-28 Days	Post Neonatal Death 28+ Days		
VVLBW<1000 VLBW 1000-1499	Maternal Health					
		2002	5.2			
		2003	6.0			
		2004	5.6			
		2005	10.6			
		2006	4.0			
		2007	6.1			
		2008	6.2			
		2009	5.2			
		2010	5.0			
LBW 1500-2499 Normal BW	Maternal Care	Newborn Care		Infant Care		
	2002	1.9	2002	1.9	2002	2.2
	2003	2.4	2003	0.0	2003	1.2
	2004	2.4	2004	0.8	2004	0.8
	2005	1.2	2005	1.6	2005	2.4
	2006	2.0	2006	0	2006	1.2
	2007	4.9	2007	1.2	2007	0.8
	2008	3.1	2008	2.7	2008	2.3
	2009	2.0	2009	0.4	2009	2.0
	2010	2.5	2010	0.8	2010	0

	2002	11.1
	2003	9.6
	2004	9.6
	2005	16.2
	2006	7.3
Total Fetal-Infant Mortality:	2007	13.4
	2008	14.2
	2009	9.6
	2010	8.7

	2002	8.5	DPH #	8.8
	2003	4.8	4.3	
	2004	6.0	6.6	
	2005	13.4	13.9	
	2006	4.8	5.0	
	2007	8.1	8.2	
	2008	10.8	7.0	
	2009	7.2		
Total Infant Mortality:	2010	5.8		